

x
BRONX BIOLAB

SOUTH BRONX BLUEWAY

NATE WOOTEN

***2.3 ACRES, HARLEM RIVER AT PARK AVENUE, MOTT HAVEN AND
A SERIES OF BOAT DOCK SITES DESIGNED AS SMALL “PARK SHIPS”***

THE SOUTH BRONX WATERFRONT IS:

-Set to change...

Sobro Rezoning (2009)



Friends of Brook Park (1999)



+

South Bronx Unite (2012)



Hurricane Sandy (2011)



DEVELOPMENT PRESSURE
COMMUNITY COALITION
A REDISCOVERED SHORELINE

Metro North Bridge

Madison Ave Bridge

Steel Piles
recent / attach

Oak Point Link

Con Edison Structure
dis-used / re-use

Rip Rap
re-use

Con Edison Structure
dis-used / re-use

Wooden Crib
dilapidated / re-use

Wooden Crib + Tie-up
dilapidated / re-use

Steel Piles
recent / attach

Third Ave Bridge



Metro North Bridge

Madison Ave Bridge

Steel Piles
recent / attach

Oak Point Link

Con Edison Structure
dis-used / re-use

Rip Rap
re-use

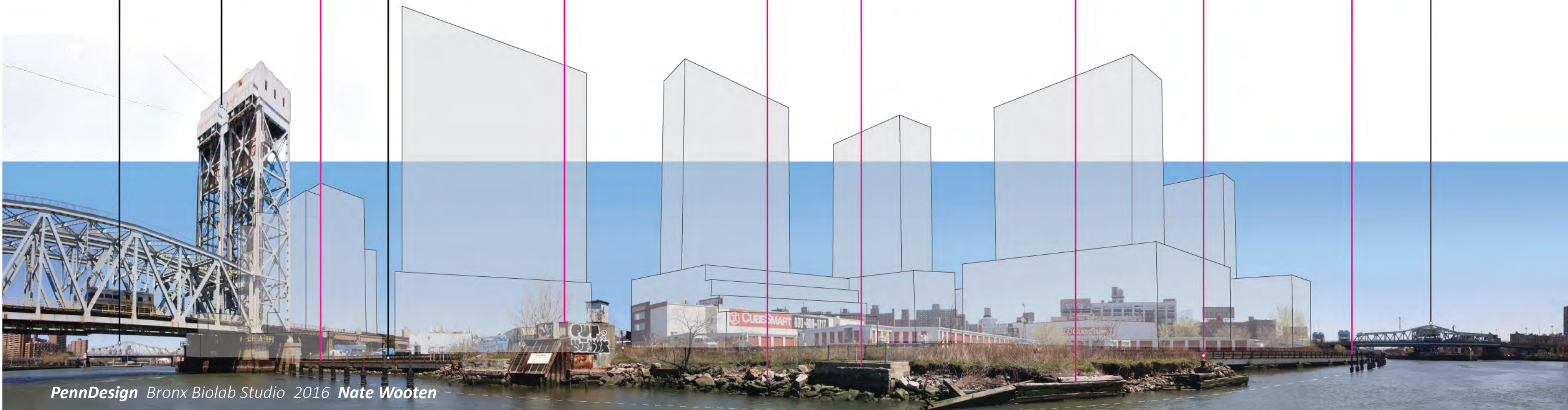
Con Edison Structure
dis-used / re-use

Wooden Crib
dilapidated / re-use

Wooden Crib + Tie-up
dilapidated / re-use

Steel Piles
recent / attach

Third Ave Bridge



1782

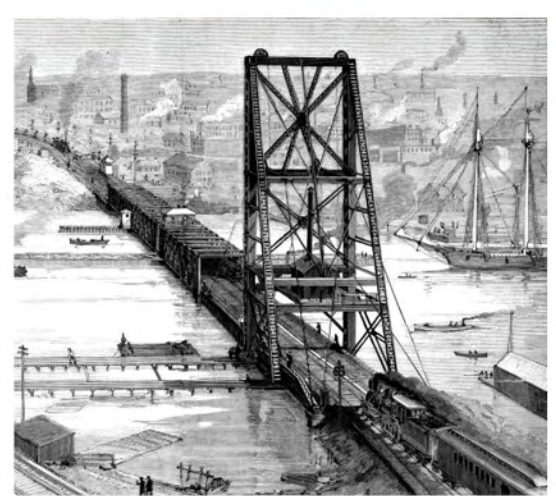
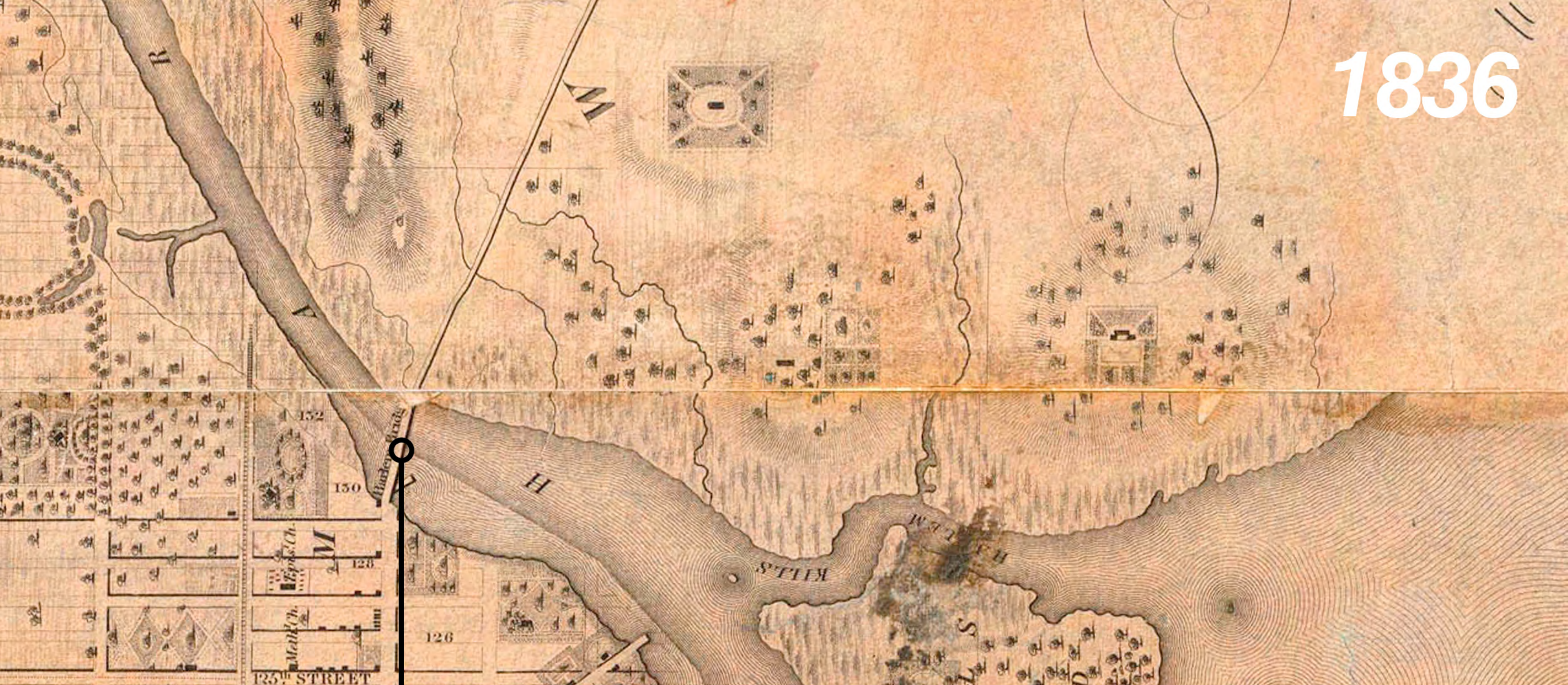


Source: "Facsimile of the unpublished British head quarters coloured manuscript map of New York & environs" The New York Public Library Digital Collections, 1900. <<http://digitalcollections.nypl.org/items/66592122-d4c5-198f-e040-e00a18066c1>>



Morrisania Mansion

1836



First Harlem River Bridge

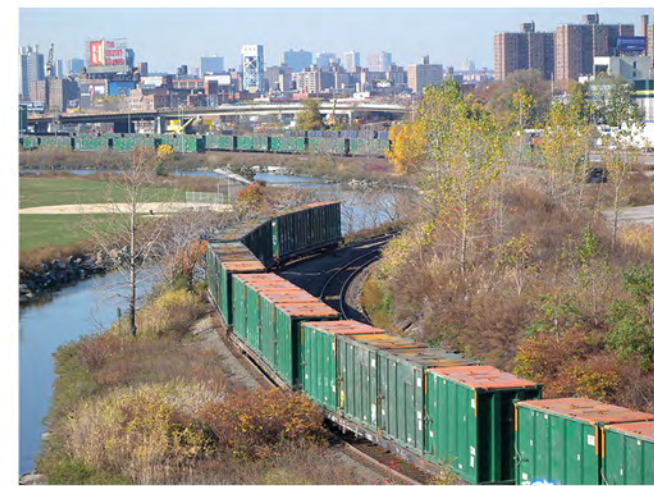
1874



Source: Lionel Pincus and Princess Firyal Map Division, The New York Public Library, "Topographical atlas of the city of New York, including the annexed territory showing original water courses and made land." The New York Public Library Digital Collections, 1874. <http://digitalcollections.nypl.org/items/510d47e2-63a5-a3d9-e040-e00a18064a99>



Mott Haven Canal

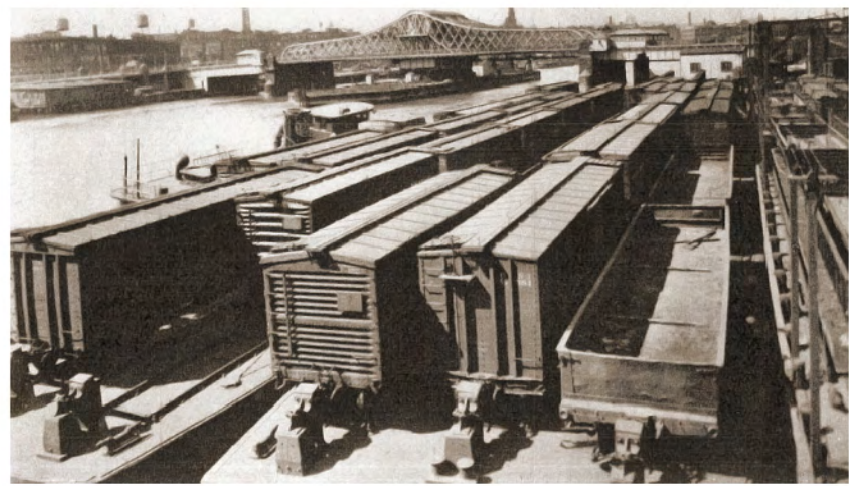


NY NH & H Railroad Line

1899



Source: Lionel Pincus and Princess Firyal Map Division, The New York Public Library. "New York City and Vicinity." The New York Public Library Digital Collections. 1894. <http://digitalcollections.nysl.org/items/6db24730-757e-0131-8c41-58d385a7bbd0>



Harlem River Yard

1924



Source: Lionel Pincus and Princess Firyal Map Division, The New York Public Library. "Bay and harbor of New York." The New York Public Library Digital Collection. 1889. <http://digitalcollections.nypl.org/items/606119e2-23b23-8c77-e040-e00a1806640f>



Harlem Transfer (Park Ave Site)



Bronx Terminal (CNJ)

1951



Source: Lionel Pincus and Princess Firyal Map Division, The New York Public Library. "Bay and harbor of New York." The New York Public Library Digital Collections. 1889. <http://digitalcollections.nypl.org/items/606119e2-3b23-8c77-e040-e00a1806640f>

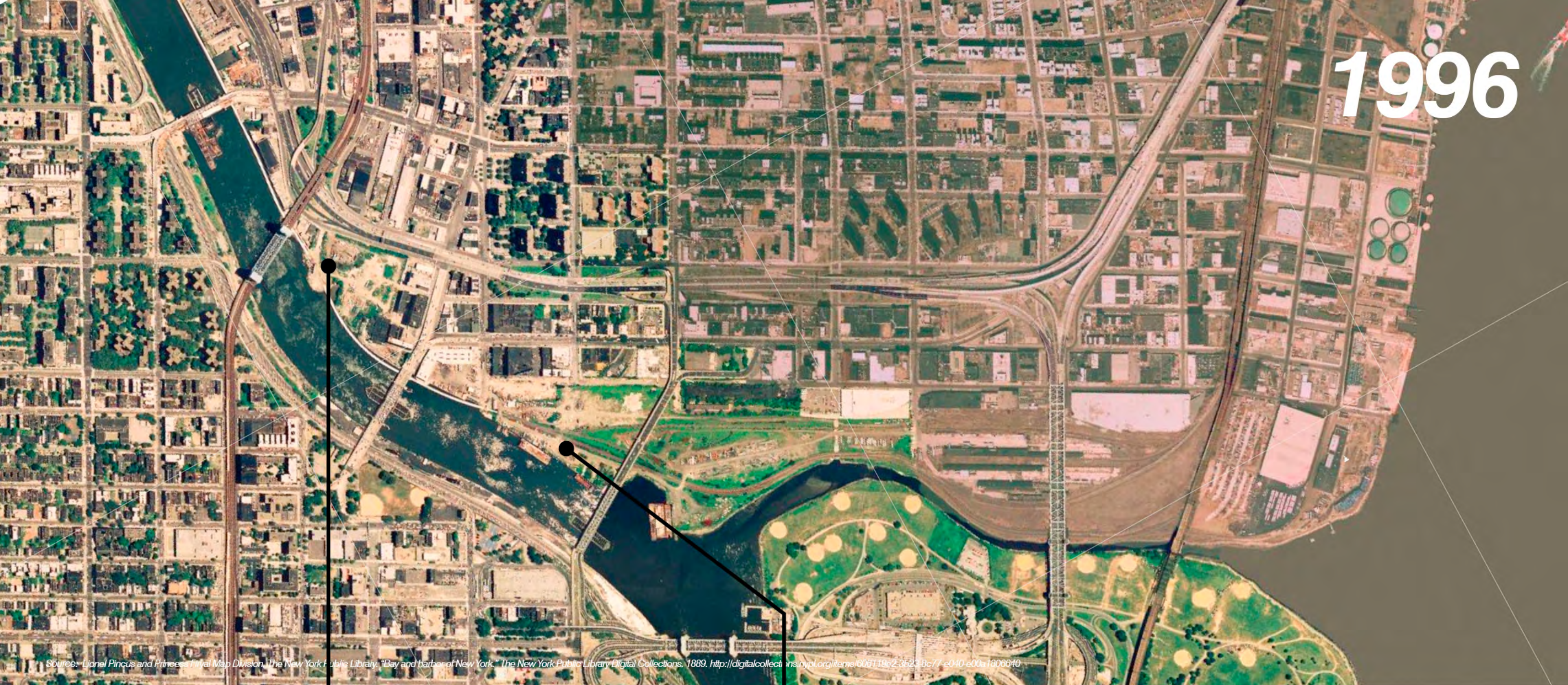


Deegan Expressway (I-87)



Bronx Kill Infill

1996



Source: Lionel Pincus and Princess Firyal Map Division, The New York Public Library, "Bay and harbor of New York," The New York Public Library Digital Collections, 1889. <http://digitalcollections.nypl.org/items/606119e2-3523-8c77-e040-e00a1806640>

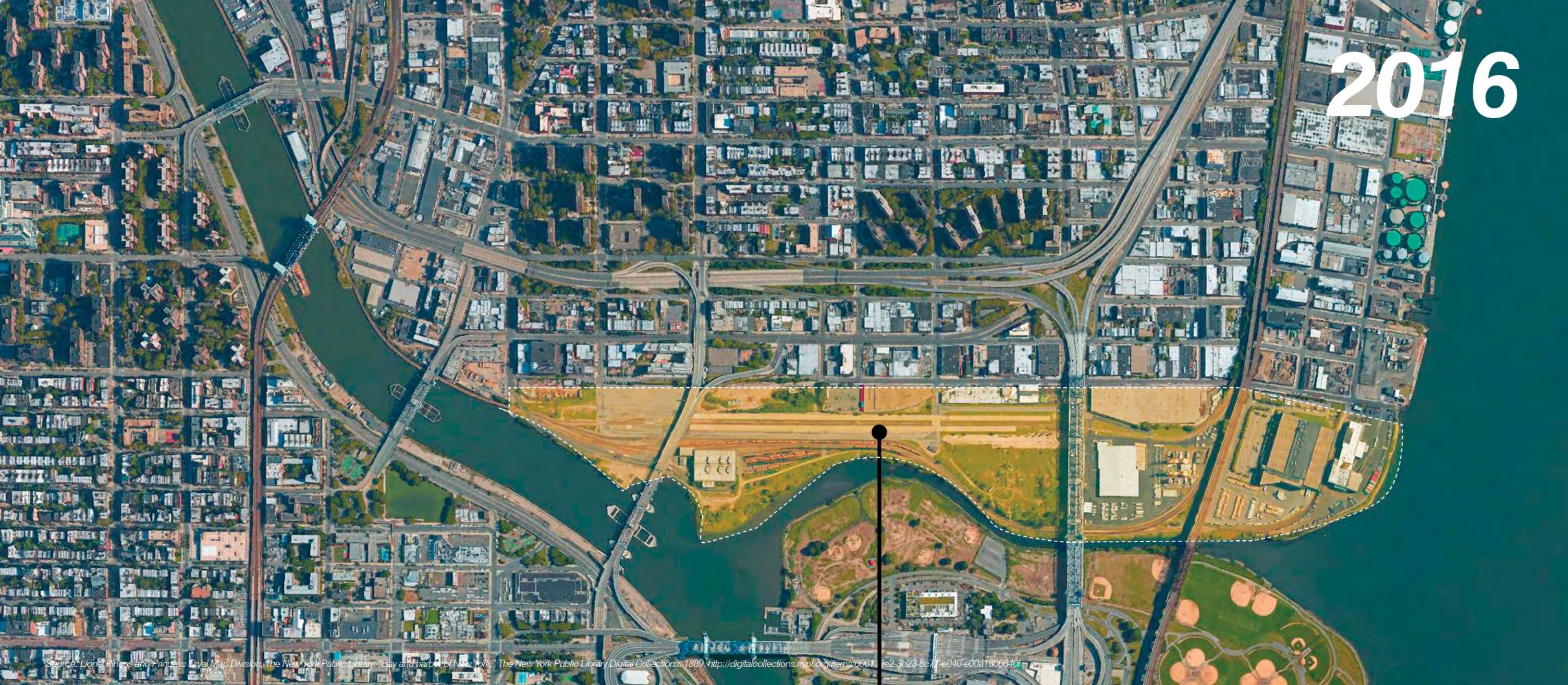


Industrial Decay / Demolition



Oak Point Link

2016



Source: Lionel Prince and Princess Royal Map Division, The New York Public Library, "Bay and harbor of New York," The New York Public Library Digital Collections, 1889, <http://digitalscollections.nypl.org/items/60611e2-3b23-8c77-e040-e00a1806640f>



Harlem River Yards Ventures 99 Year Lease (1991)

●● MODERATE_Harlem River

Width: 350'-450'
Depth: 15'-25'
Traffic: Moderate

● BEGINNER_Bronx Kill

Width: 50'-200'
Depth: 1'-10'
Traffic: None

●●● EXPERT_East River

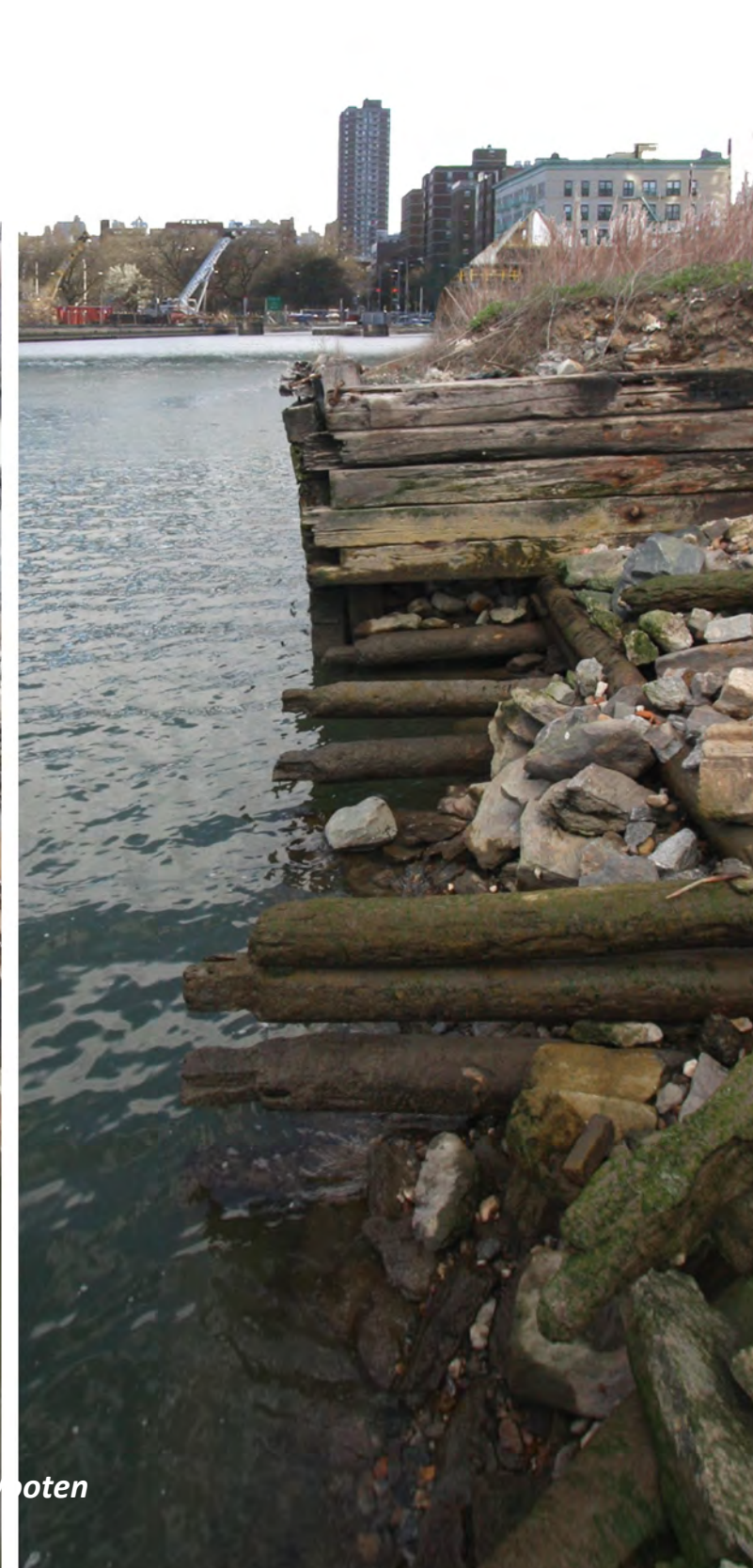
Width: 1500'-5000'
Depth: 35'-95'
Traffic: High

HOW TO OVERCOME THESE LAYERS OF INFRASTRUCTURE?

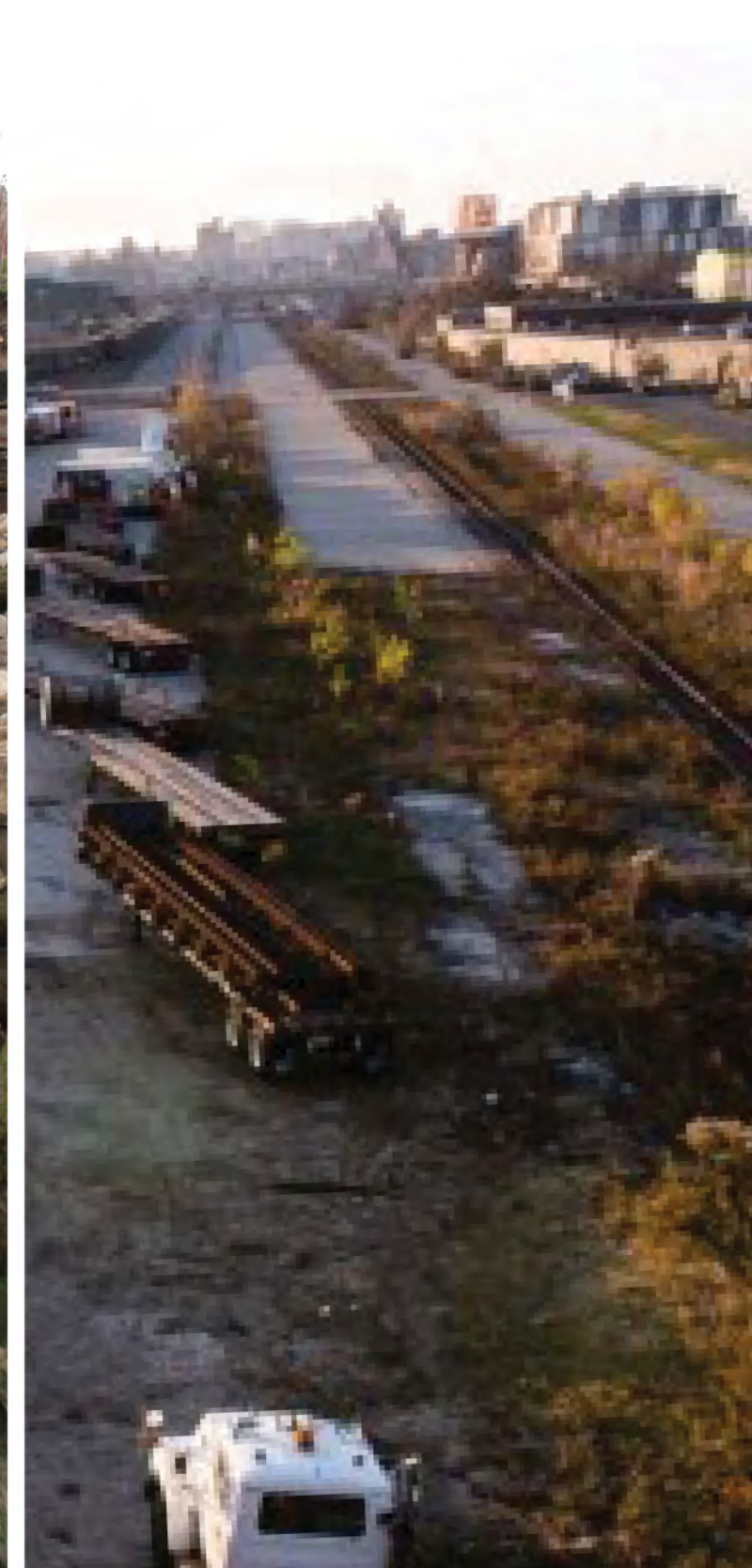
Oak Point Link



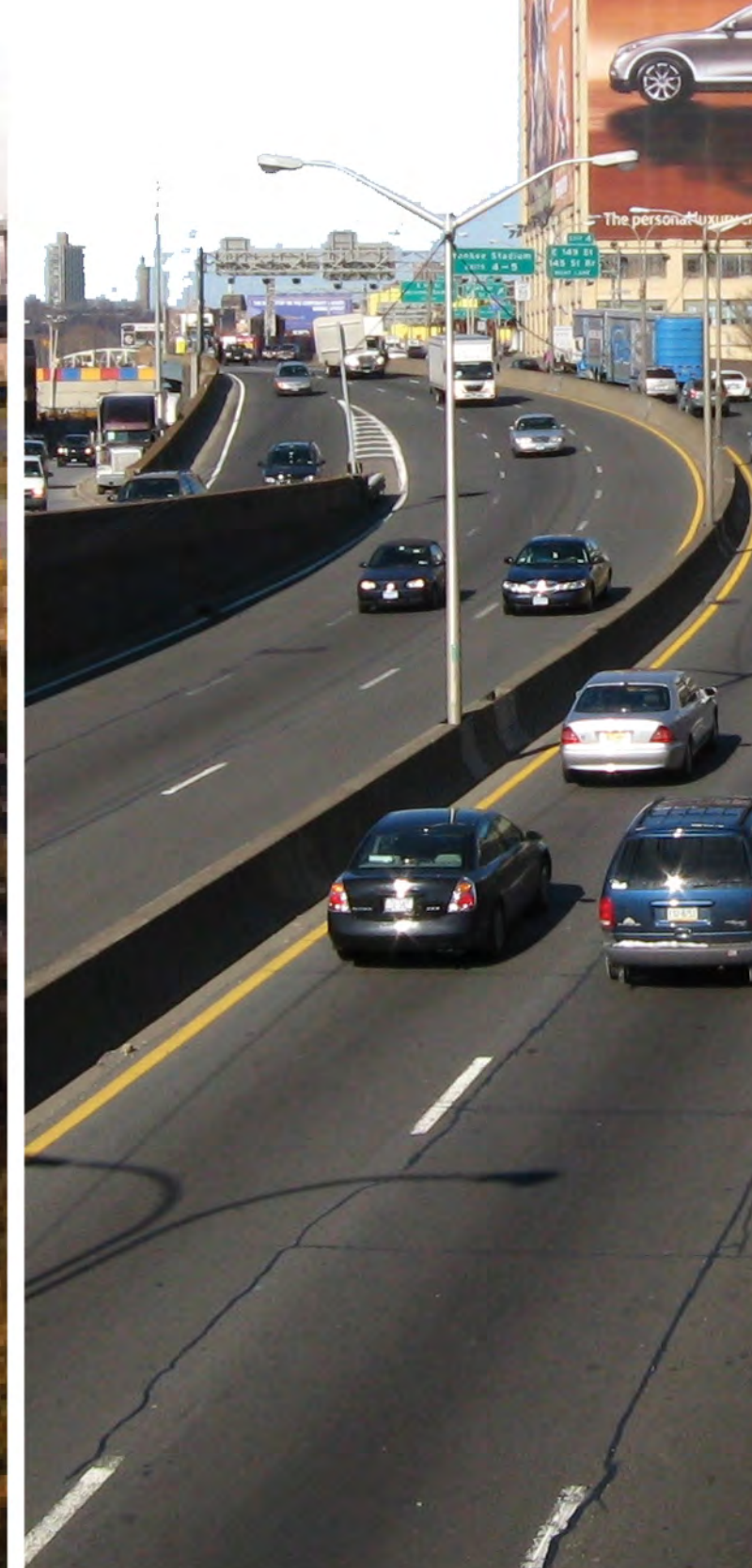
Bulkheaded Shoreline



Harlem River Yard



Deegan Expressway



PARK AVE SITE TODAY

Metro North
84.7 million passengers per year



Oak Point Link
\$187,000,000
(2) trains per day



138th St.
Grand Concourse 5 4

3rd Ave.
138th St. 6

PARK AVE_PARKSHIP



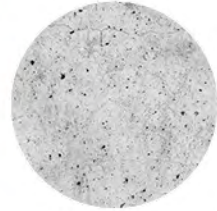
CRIB STRUCTURE MATERIAL OPTIONS



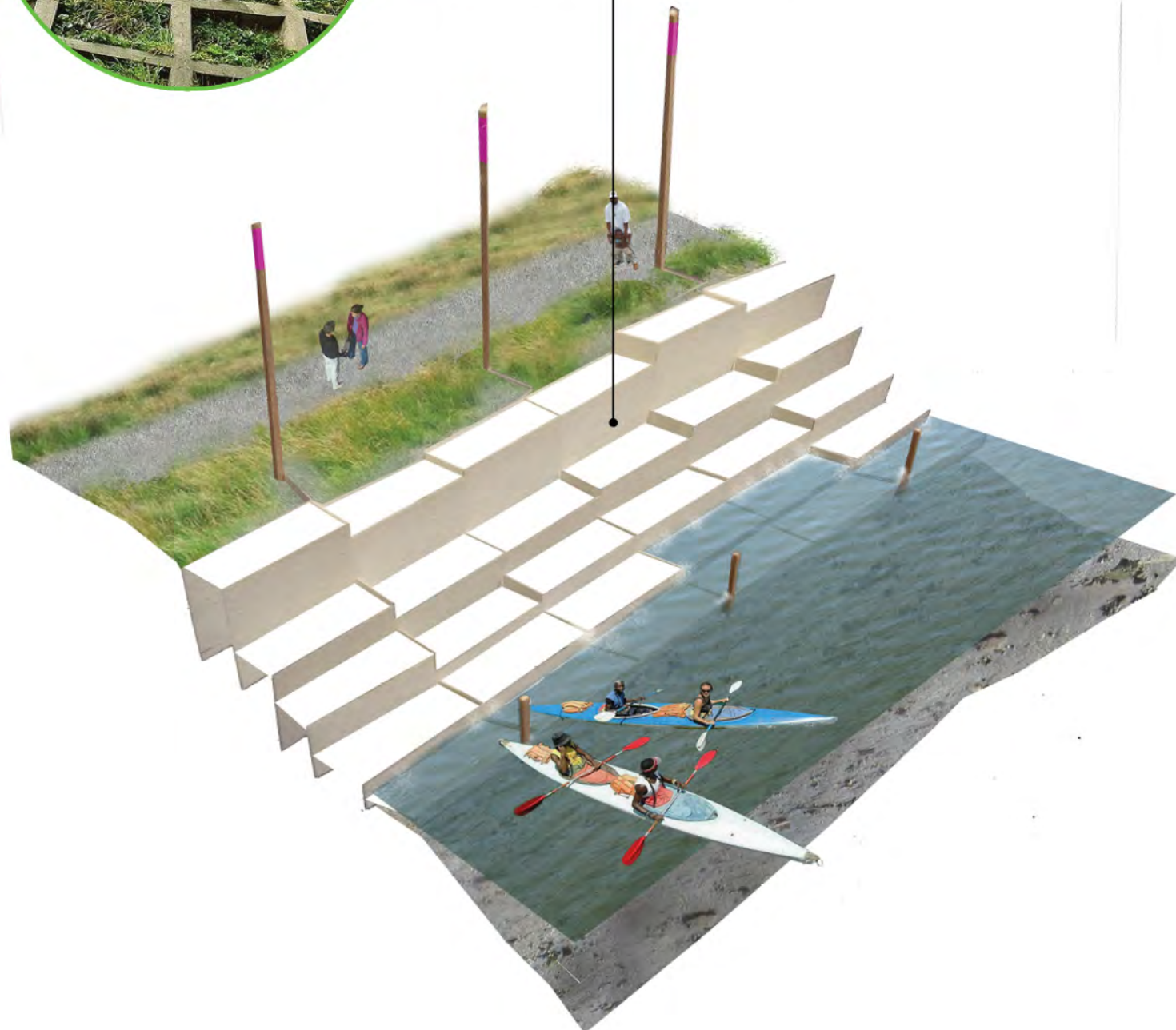
Structure



Timber



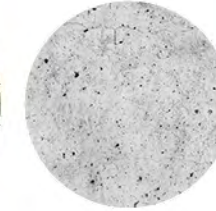
Concrete



Structure



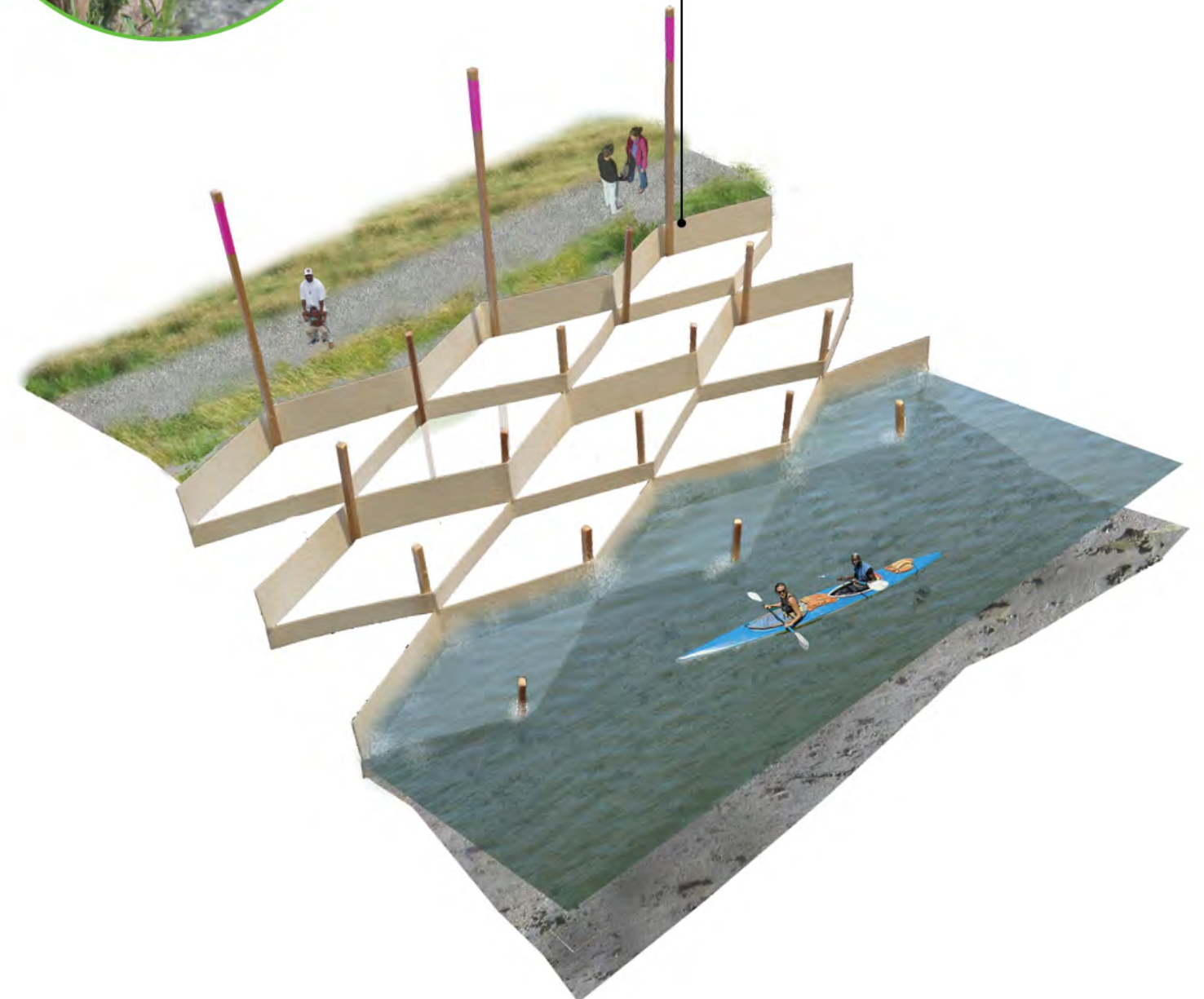
Timber



Concrete



Sheet Piles



CRIB STRUCTURE INFILL OPTIONS



Shelf Infills



Spartina



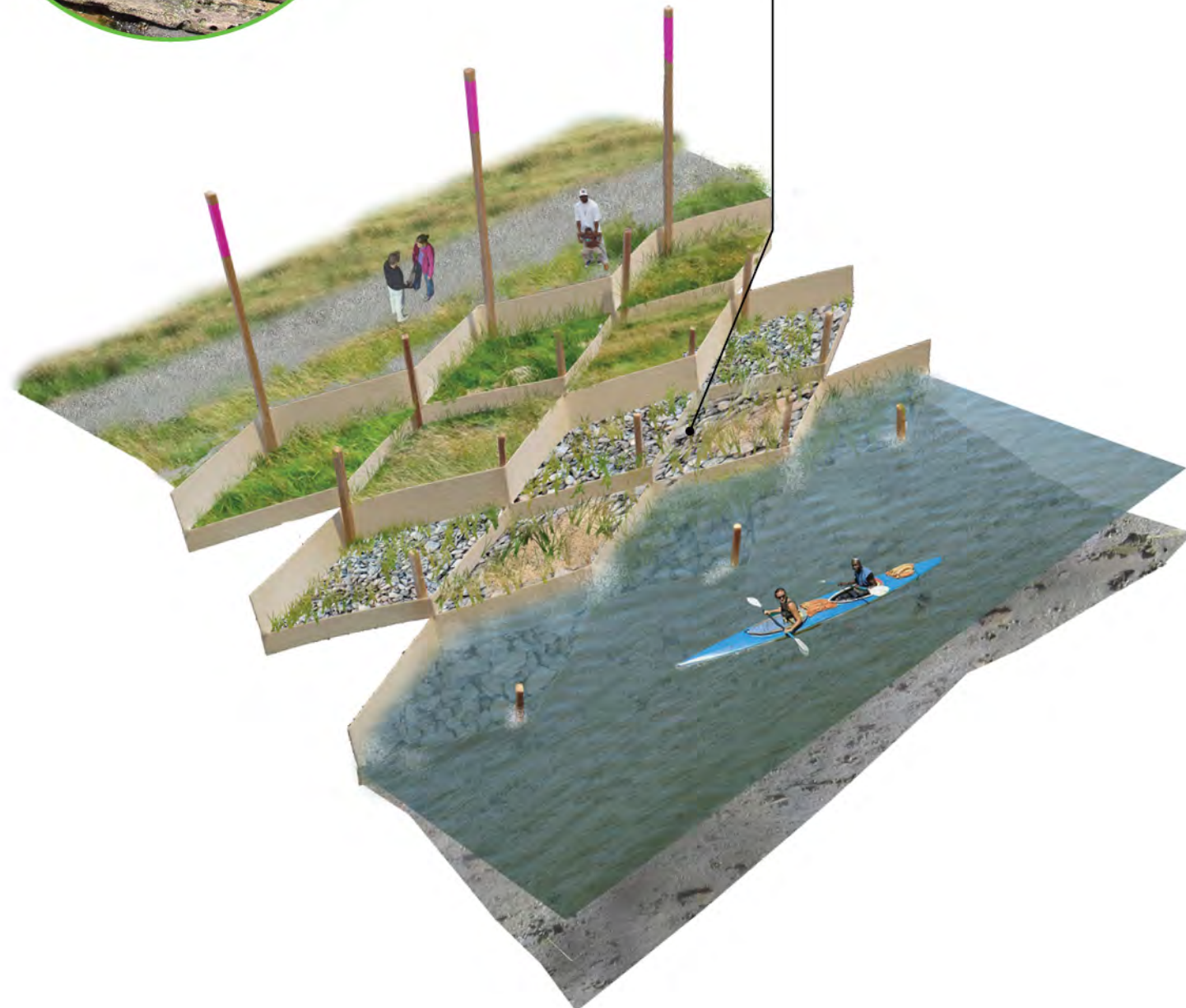
Mussels



Broken Stone



Sand



Shelf Infills



Stone



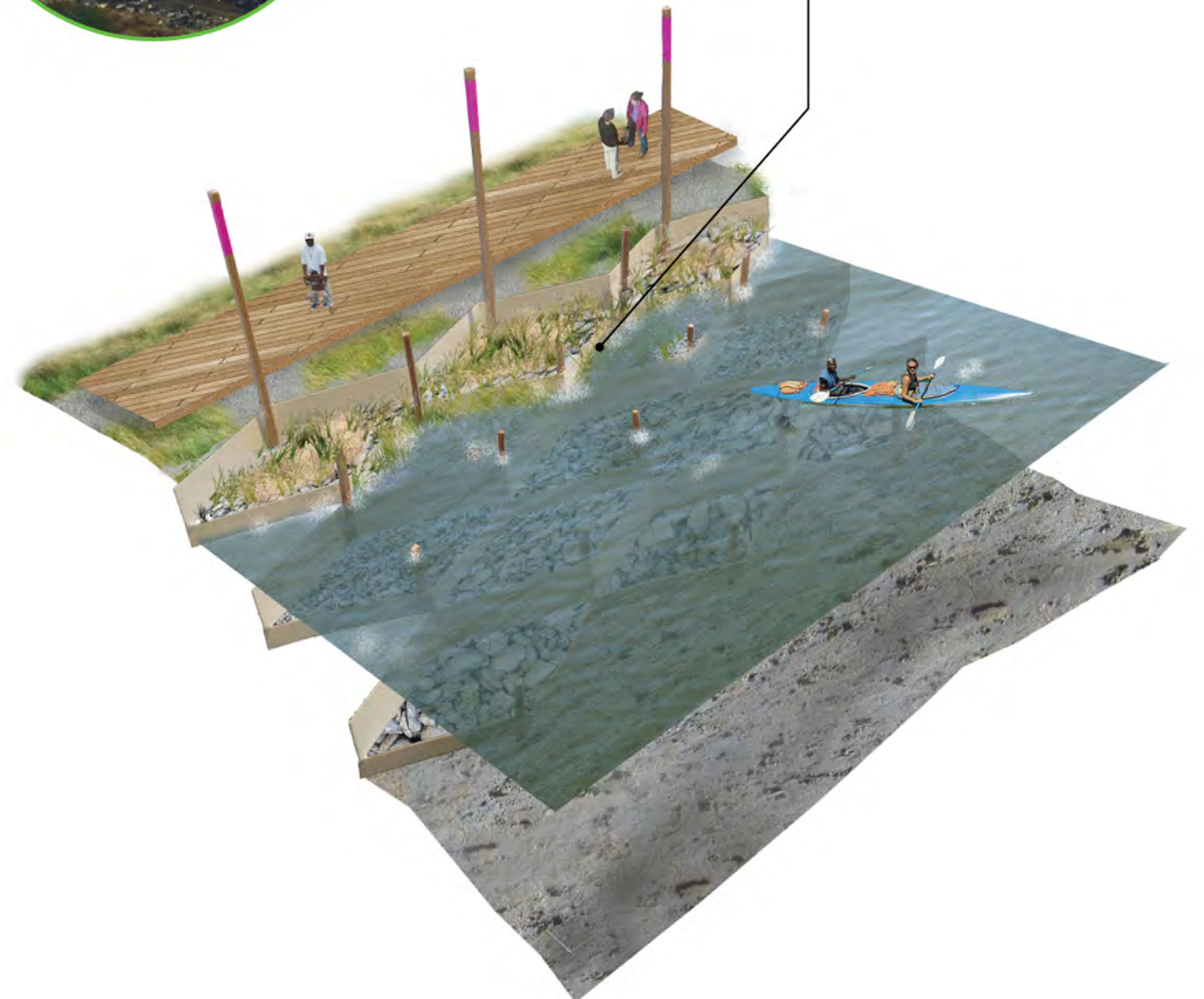
Plastic Liner



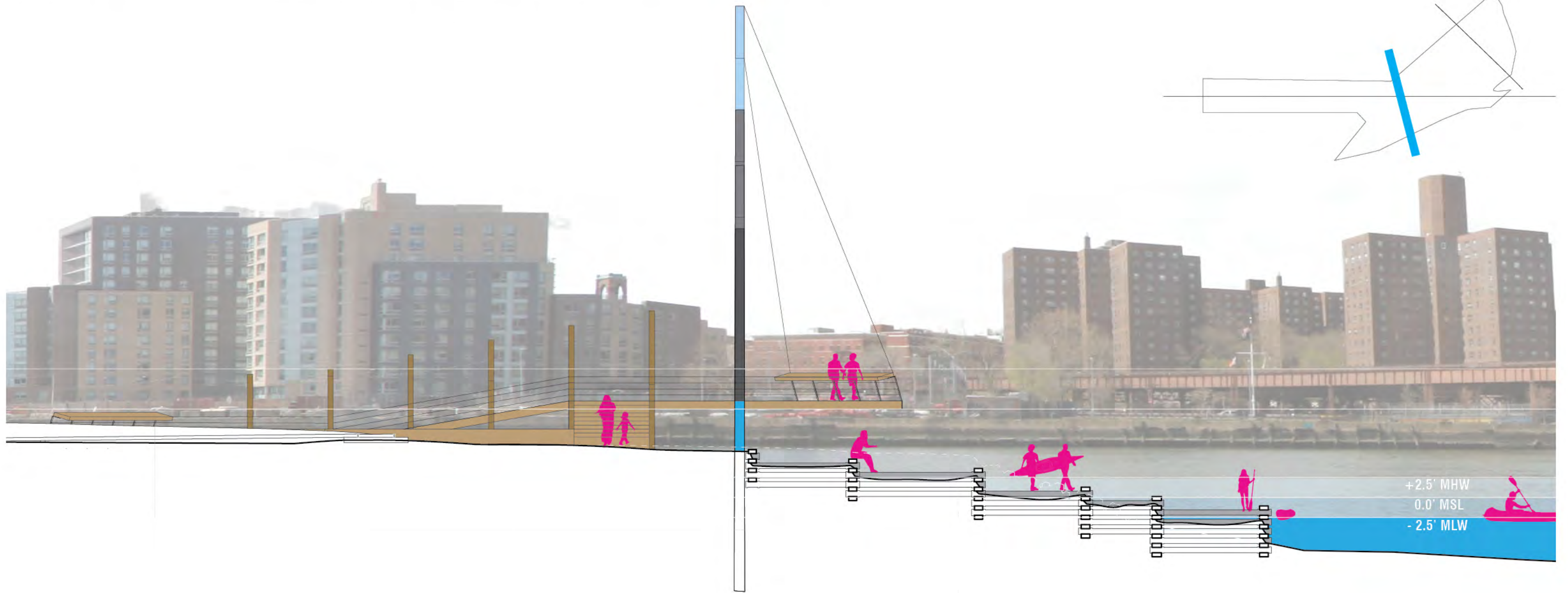
Dolis



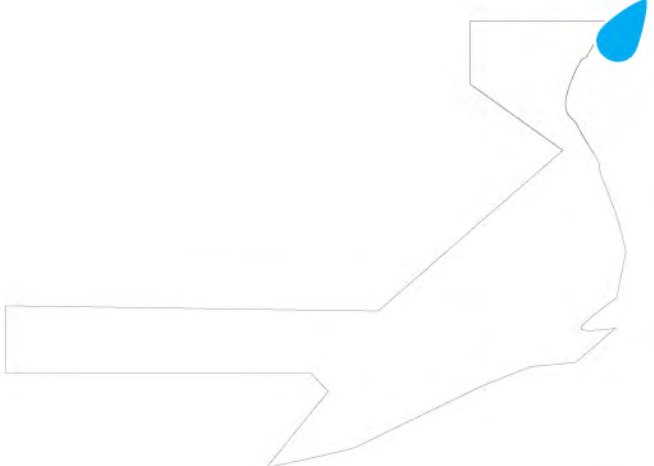
Shells



SECTION AT CONCRETE TIDAL TERRACE

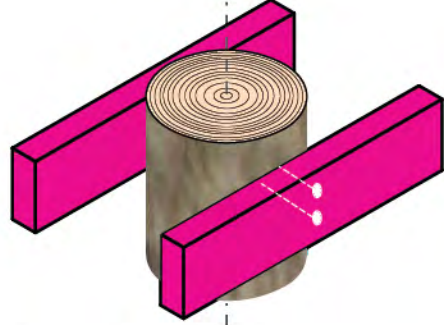


WOODEN TIDAL TERRACE

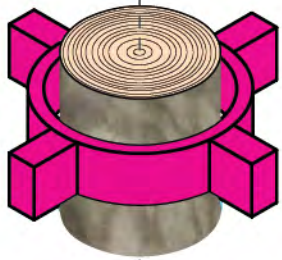


Piles / Attachments

Brackets



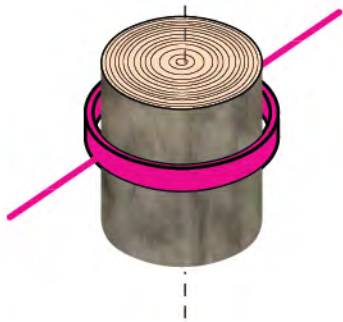
Collar Guides



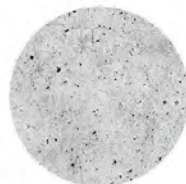
Wraps



Cables



Timber



Concrete



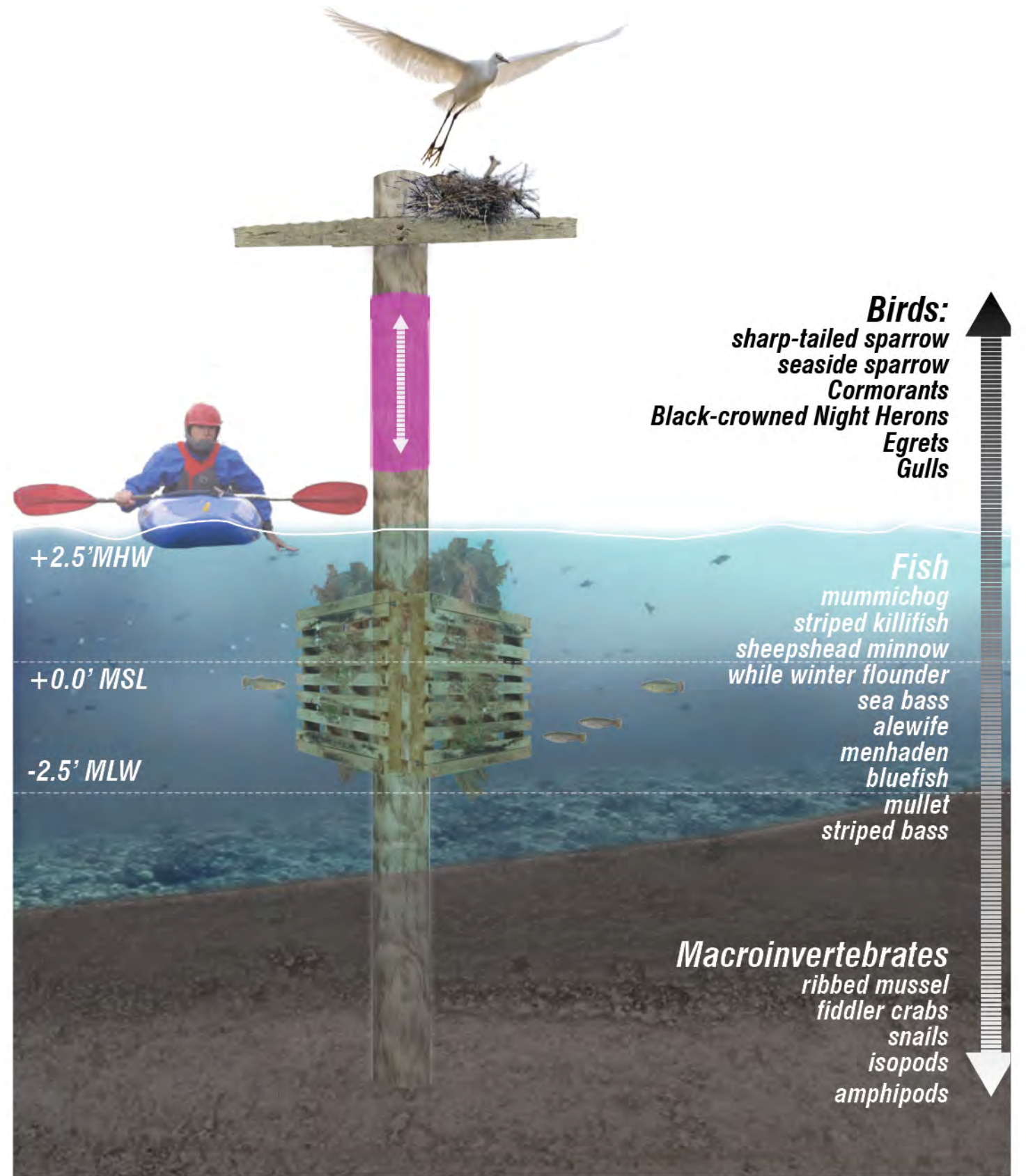
Steel Tubes



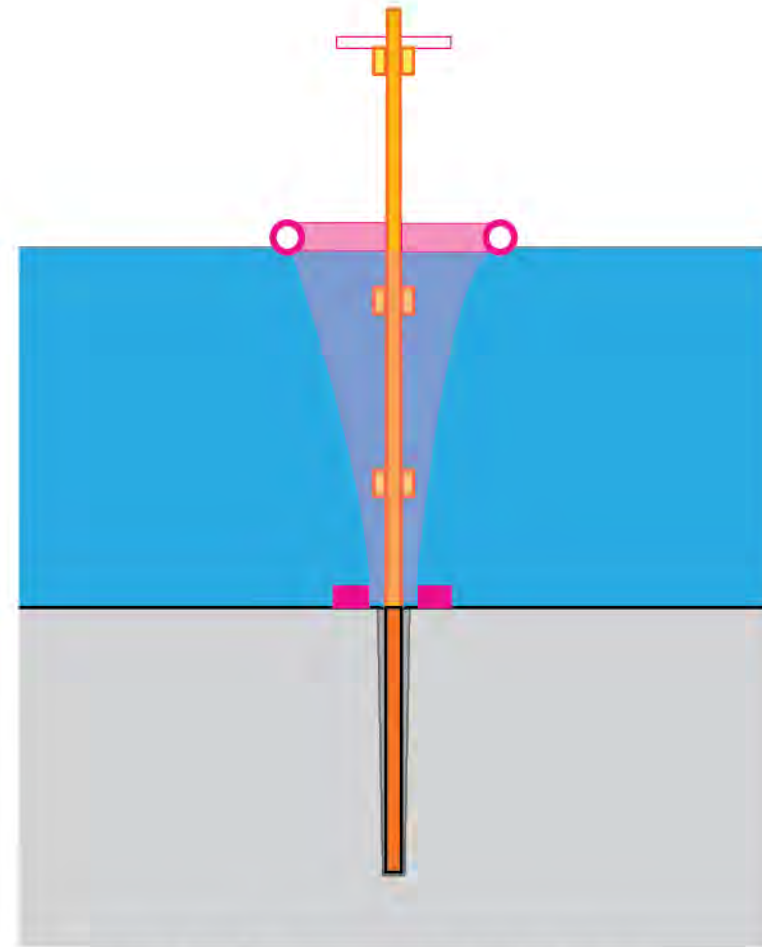
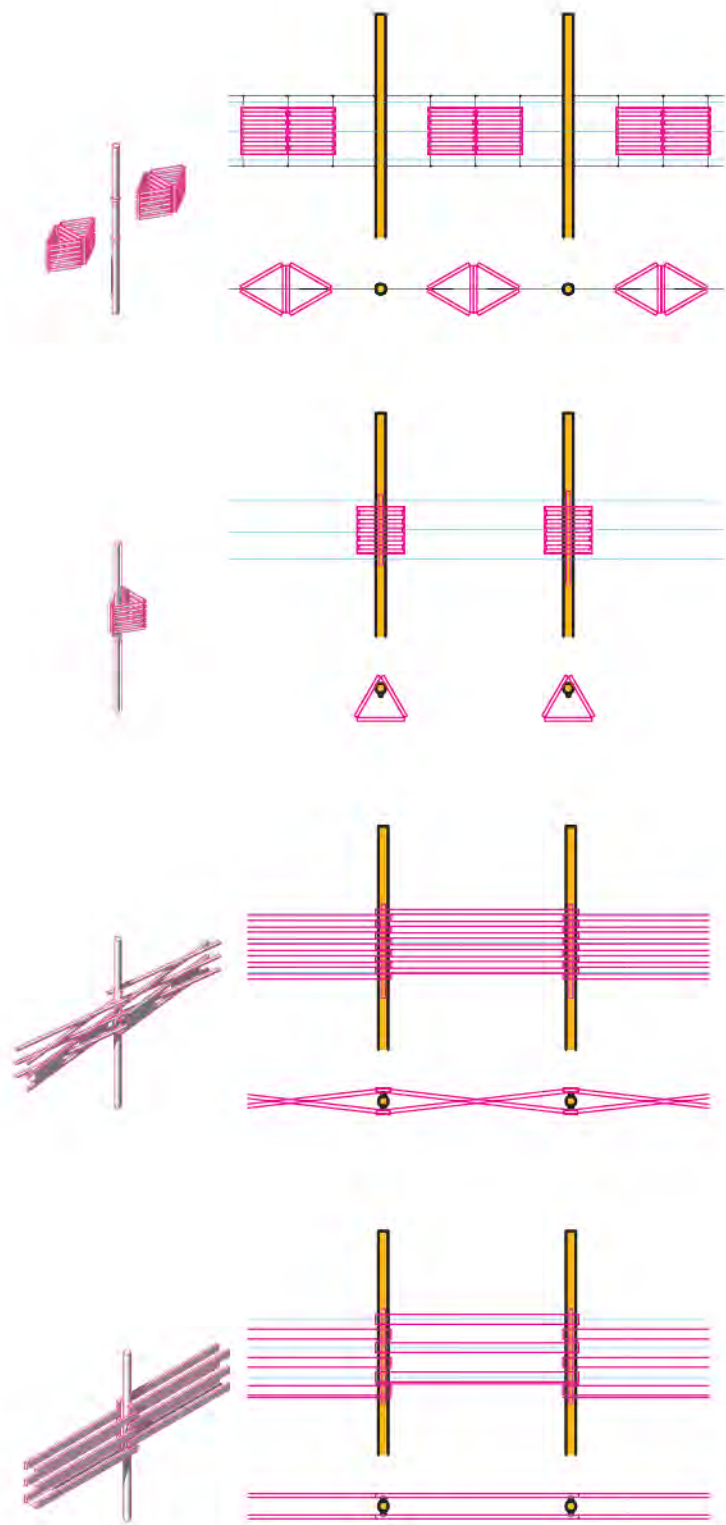
Composte



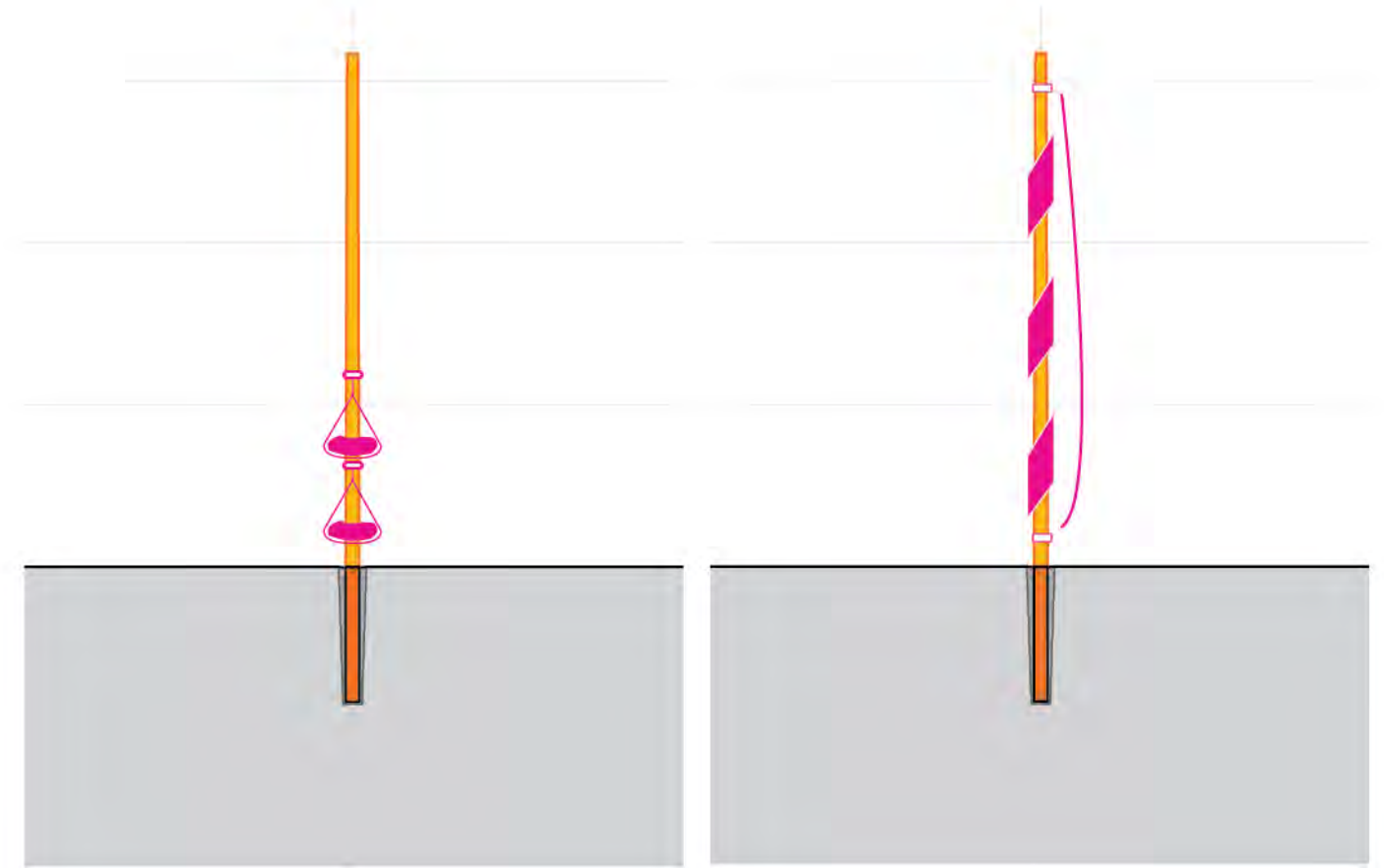
PVC



Piles / Attachments

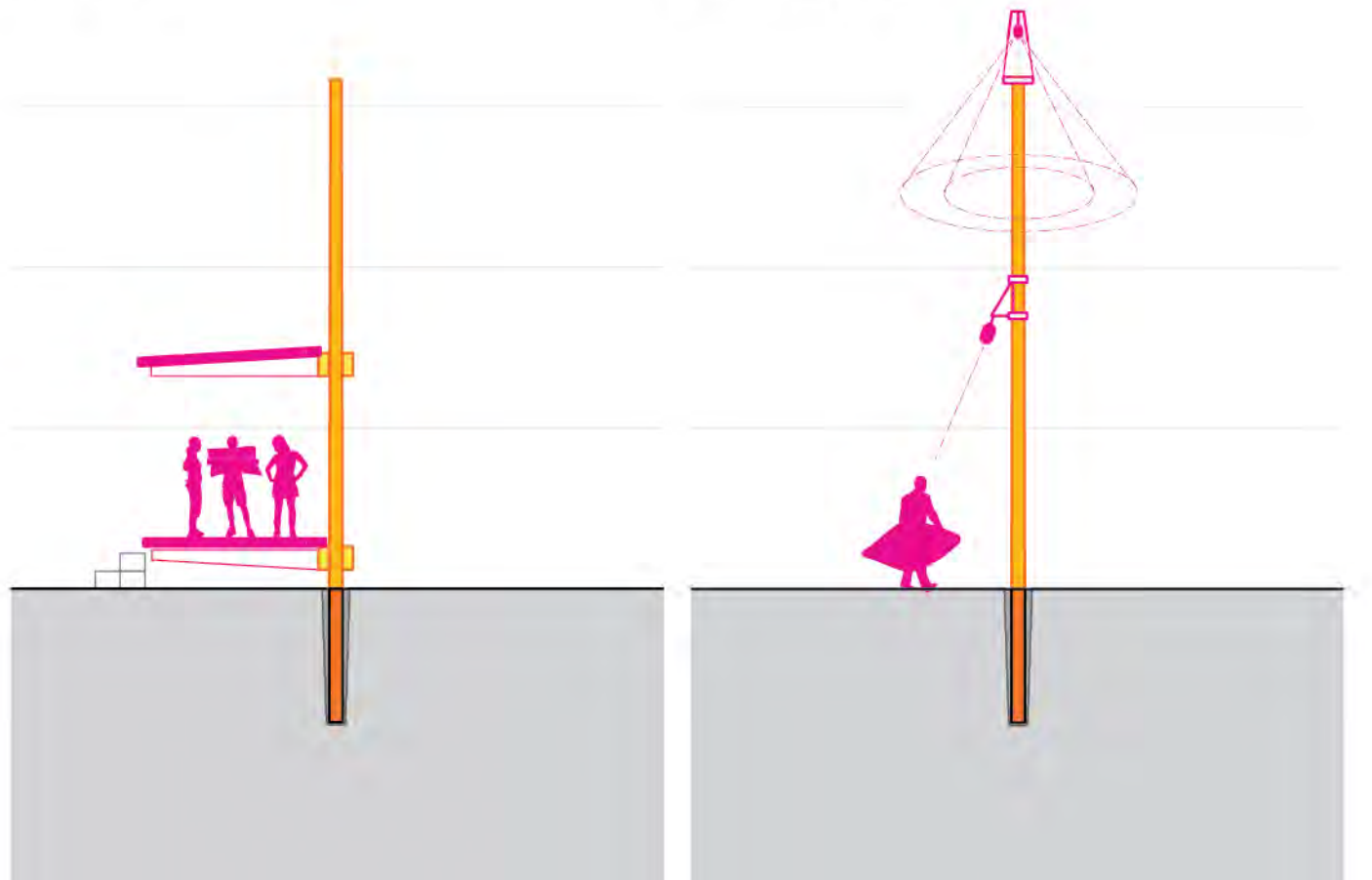


Floating / Suspended Habitat



Storage

Messaging



Structures

Lighting